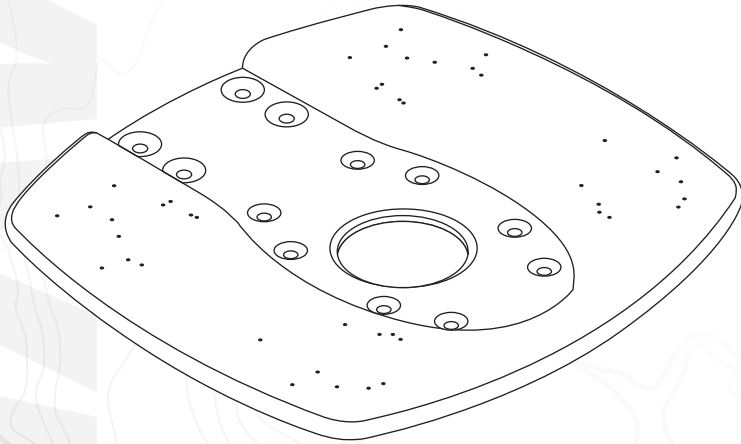


SEAVIEW

ELEVATE YOUR ELECTRONICS



INSTALLATION INSTRUCTIONS

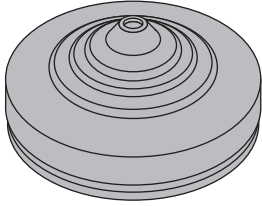
For Seaview Modular Top Plate:

ADA-R1

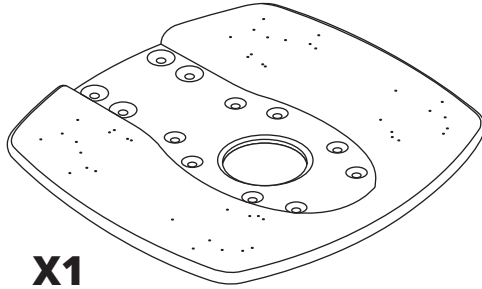
Refer to website for most up to
date instructions and videos.

WWW.SEAVIEWGLOBAL.COM

PARTS INCLUDED



X1



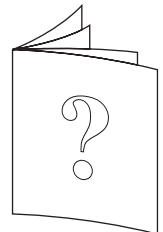
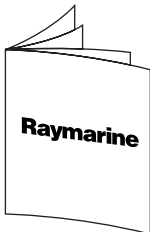
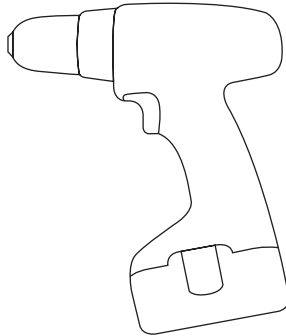
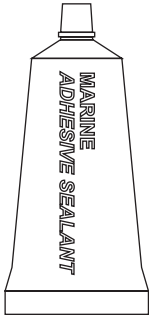
X1

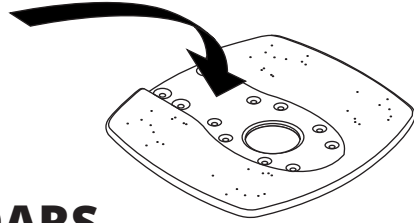
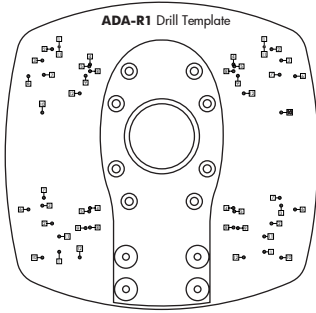


X8

5/16-18 x 1"

TOOLS NEEDED





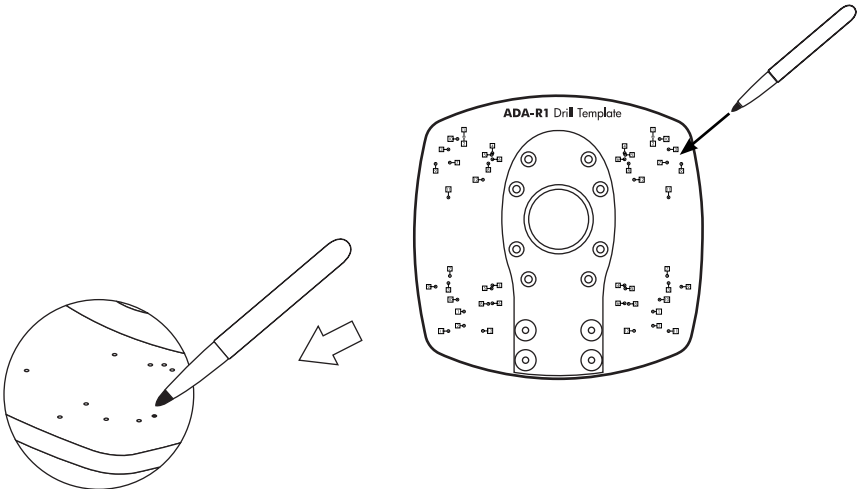
CLOSED DOME RADARS

Hole #	Manufacturer	Model
11	B&G	BR24, 3G, 4G
12	Furuno	15" - 24" radar domes
11	Garmin	18" - 24" and Fantom radar domes
8	Geonav	24" radar domes
4	JRC	15" radar domes
4	Koden	18" (MDC 900 Series) radar domes RB714A
		15" (MDC 900 Series) radar domes TB715A
10	Koden	25" radar domes, 715A, MDC 900 Series
8	Lorenz	12" - 24" radar domes
5	Lowrance	LR1800HD
11	Lowrance	BR24, 3G, 4G
10	Nobeltec	15" - 25" radar domes
3	Raymarine	18" - 24" radar domes
11	Raymarine	Quantum and Quantum 2 radar domes
8	Seiwa / Techmarine	12" - 24" radar domes
5	Simrad	18" radar domes (DX64S)
11	Simrad	BR24, 3G, 4G
5	Sitex	18" (TZ760 / T921) radar domes
10	Sitex	25" radar domes

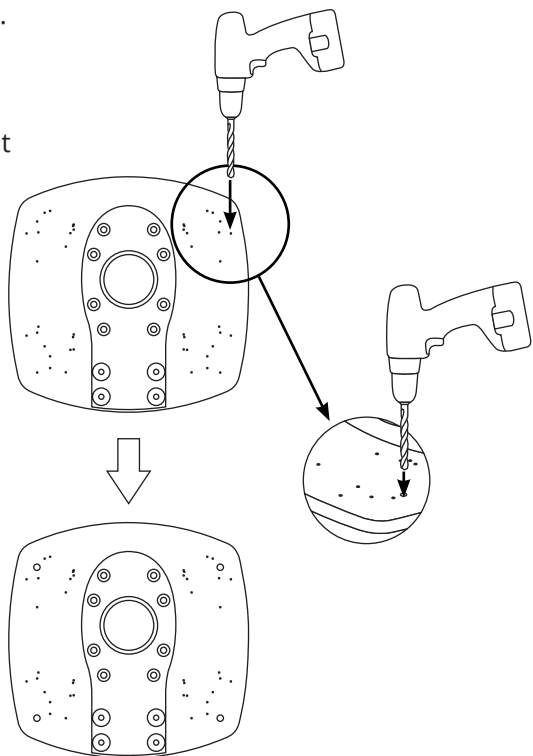
OPEN ARRAY RADARS

Hole #	Manufacturer	Model
2	Furuno	4' - 6' open array radars
2	Garmin	4' - 6' open array radars
7	Geonav	4' - 6' open array radars
9	JRC	4' - 6' open array radars
1	Koden	4' - 6' open array radars
9	Lorenz	4' - 6' open array radars
9	Lowrance	4' - 6' open array radars
1	Nobeltec	3.5' - 6' open array radars
7	Northstar	4' - 6' open array radars
6	Raymarine	4' - 6' open array radars <i>May need smaller OD washer</i>
7	Seiwa / Techmarine	4' - 6' open array radars
7	Simrad	4' - 6' (RB7 Series) open array radars
3	Simrad	4' - 6' HALO open array radars <i>Requires #ADAHALO3 adapter plate. Drill #3 for adapter plate.</i>
7	Sitex	4' - 6' open array radars

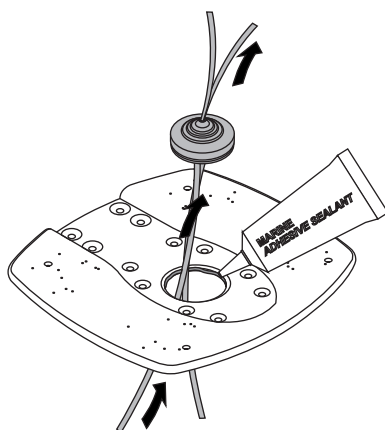
1 Locate the Make and Model of your satellite dome on this chart and determine which drill hole number yours is. Then place the ADA-R1 Drill Template on top of the ADA-R1 and mark the appropriate holes.



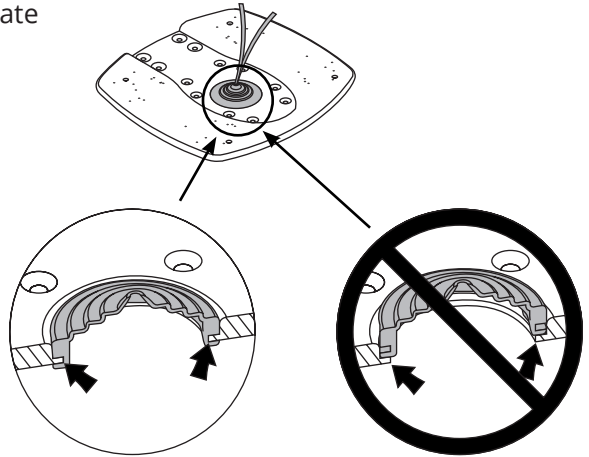
- 2** Drill the four marked holes. Be sure to check with your marine electronic manufacturers manual to determine what size drill bit is needed.



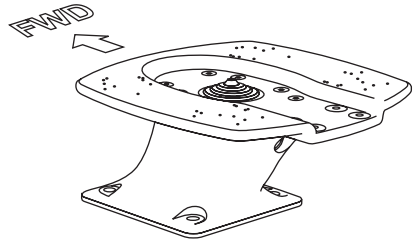
-
- 3** Apply marine adhesive sealant along the lip in the center hole on the ADA-R1. Route the cabling through the center hole in the ADA-R1. Then insert through the black rubber grommet.



4 Be sure that the Top Plate edge sits in the rubber grommet.

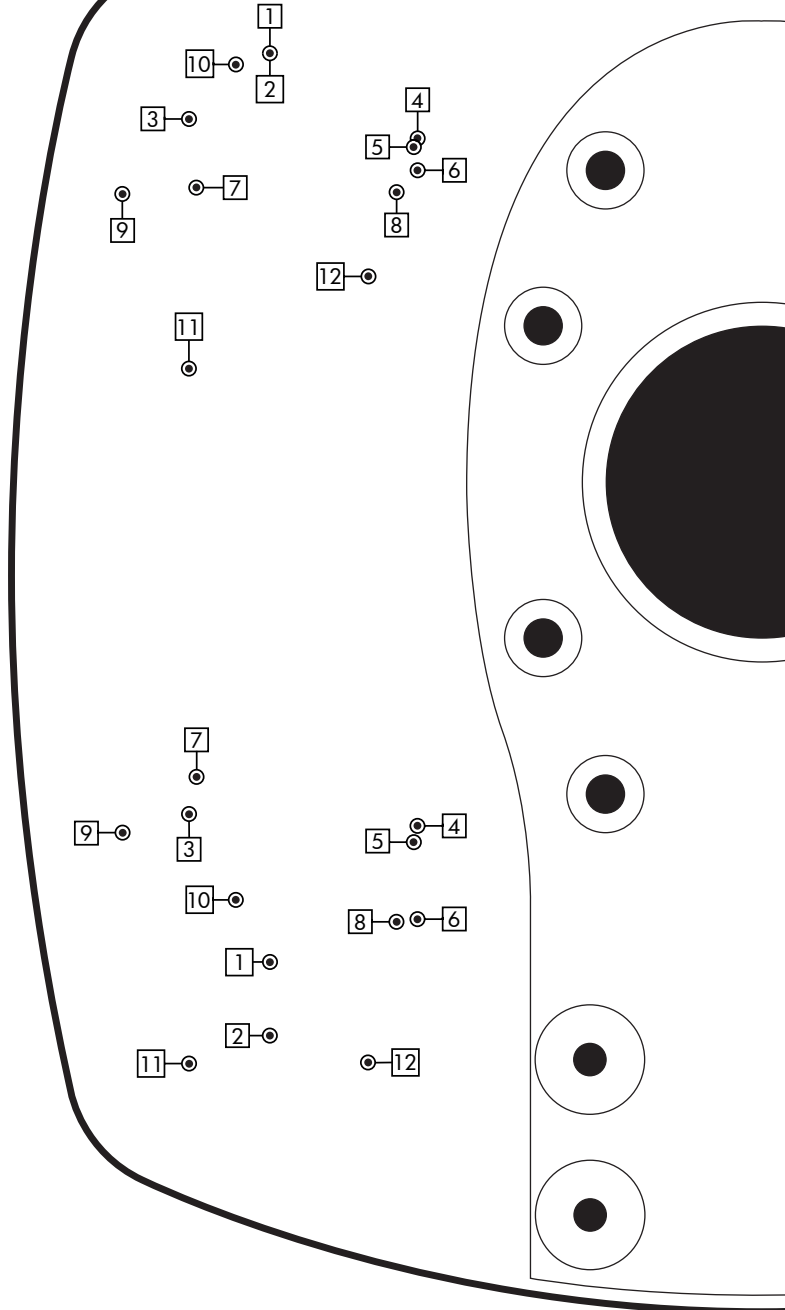


5 Make sure that the Top Plate is facing the forward when mounting



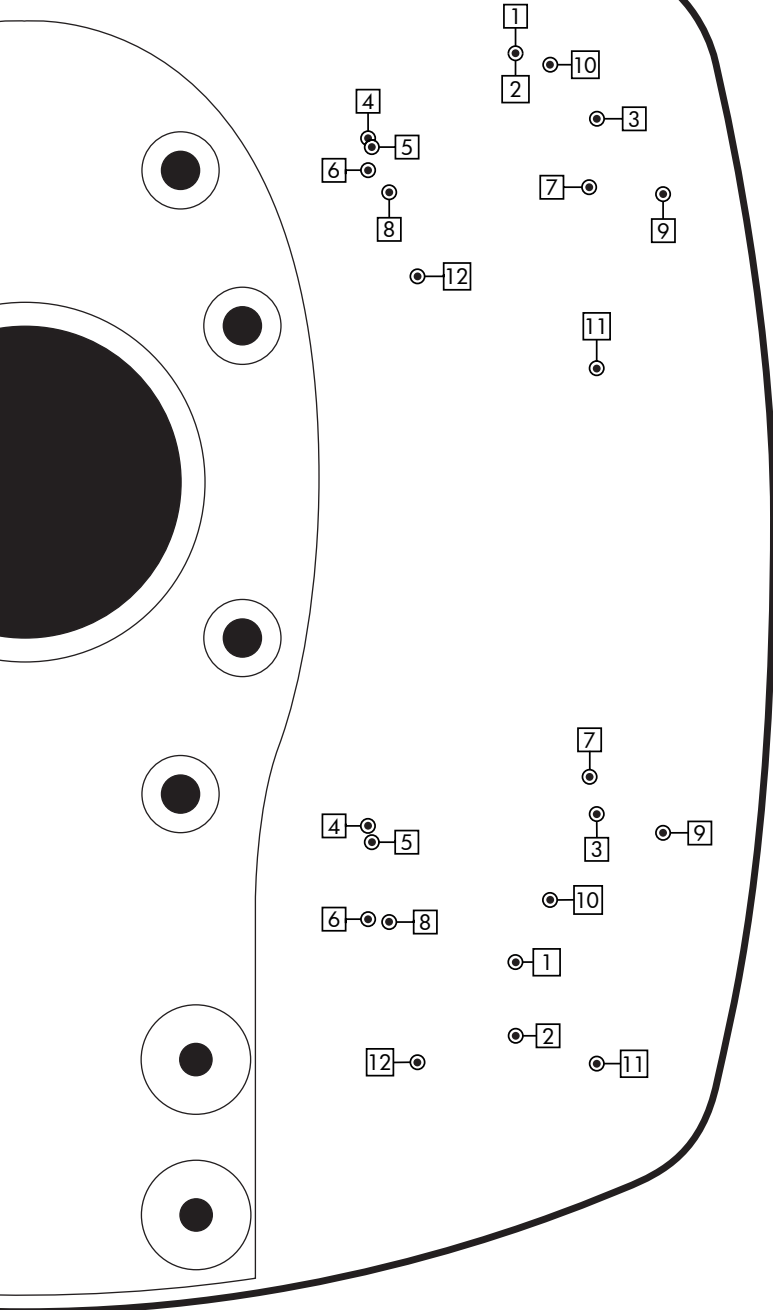
This page is intentionally left blank.

ADA-R1



NOT to scale

Drill Template



This page is intentionally left blank.

This page is intentionally left blank.

The background of the entire page is a light gray topographic map with white contour lines. The lines are irregular and wavy, representing elevation changes. The map covers the entire area, with the text elements overlaid on it.

SEAVIEW///
ELEVATE YOUR ELECTRONICS

SEAVIEW///

Tel: 800-655-7922
www.seaviewglobal.com

EUROPEAN OFFICE

Tel: +33 4 94 53 27 70
www.seaviewprogress.com

3-062618